





Creating a Roadmap for a High-Growth Community's Long-Term Solid Waste Management



John G. Carlton, P.E., BCEE
Tennessee Recycling Coalition Conference
August 14, 2017




GBB
SOLID WASTE
MANAGEMENT
CONSULTANTS




**SOLID WASTE
MANAGEMENT
CONSULTANTS**

- Quality – Value – Ethics - Results
- Established in 1980
- Solid Waste Management and Technology Consultants
- Helping Clients Turn Problems into Opportunities

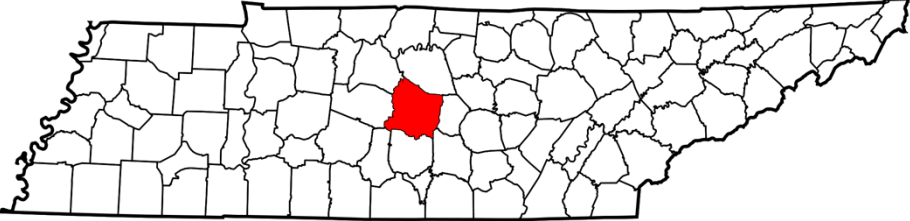


GBB
SOLID WASTE
MANAGEMENT
CONSULTANTS

2



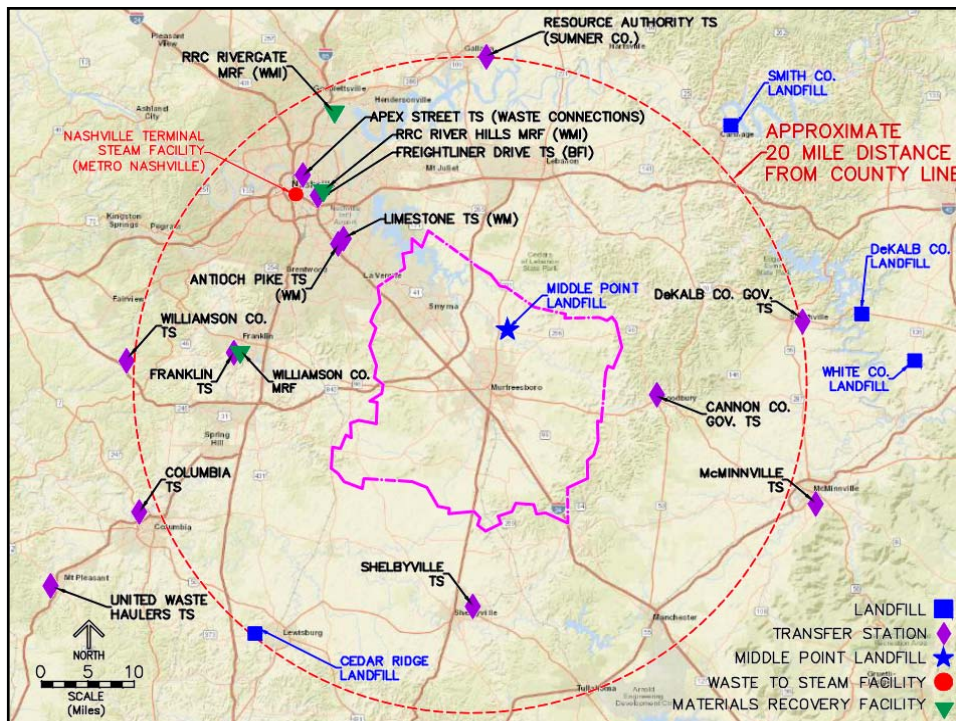
Rutherford County





Municipalities: Murfreesboro, Smyrna, La Vergne and Eagleville

GBB
SOLID WASTE
MANAGEMENT
CONSULTANTS


3



County and Municipal Programs

| Jurisdiction | 2015 Population | Population Growth Since 2010 | Solid Waste Services |
|----------------------|-----------------|------------------------------|--|
| Rutherford County | 298,612 | 13.7% | C&D Landfill, recycling centers |
| City of Murfreesboro | 126,118 | 15.7% | Mulch facility, curbside collection of waste and brush, convenience center |
| Town of Smyrna | 46,607 | 16.8% | Curbside brush collection, convenience centers |
| City of La Vergne | 34,794 | 6.8% | Curbside brush collection, convenience centers |
| City of Eagleville | 651 | 7.8% | None |


5




Limited Landfill Capacity

Landfills

- Rutherford County (C&D) Landfill expected to reach capacity in 4 years
- Middle Point Landfill expected to reach capacity in 8 years


Expiring Host Community Agreement

- The County and City of Murfreesboro each have Host Community Agreements with Jefferson Pike Landfill, Inc. (Republic Services)
- When Middle Point Landfill reaches capacity Host Community Agreements will expire

Middle Point Landfill




6



Host Community Agreements

Benefits


Free disposal for residential waste from County and City of Murfreesboro (38,000 tons/year from County and 42,000 tons/year from City)

County receives \$1.20/ton of out-of-county waste disposed at the Landfill (~ 650,000 tons/year)


City receives hauling services for dumpsters at several City properties

Leachate discharged to City's sewer system 50 percent surcharge over the standard rates


County Disposal Collection



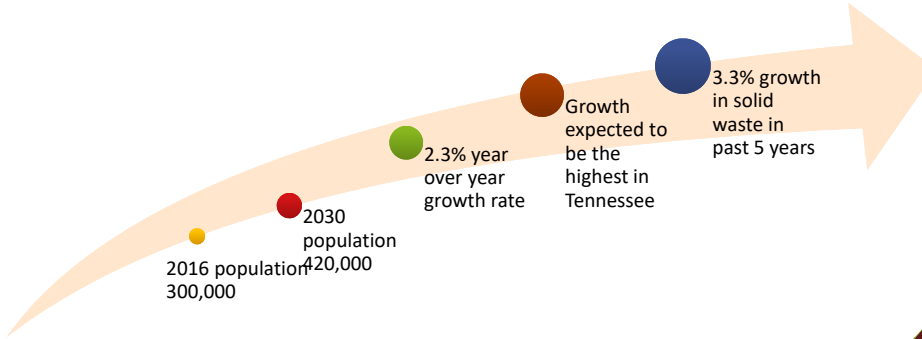
Source: Daily News Journal




7



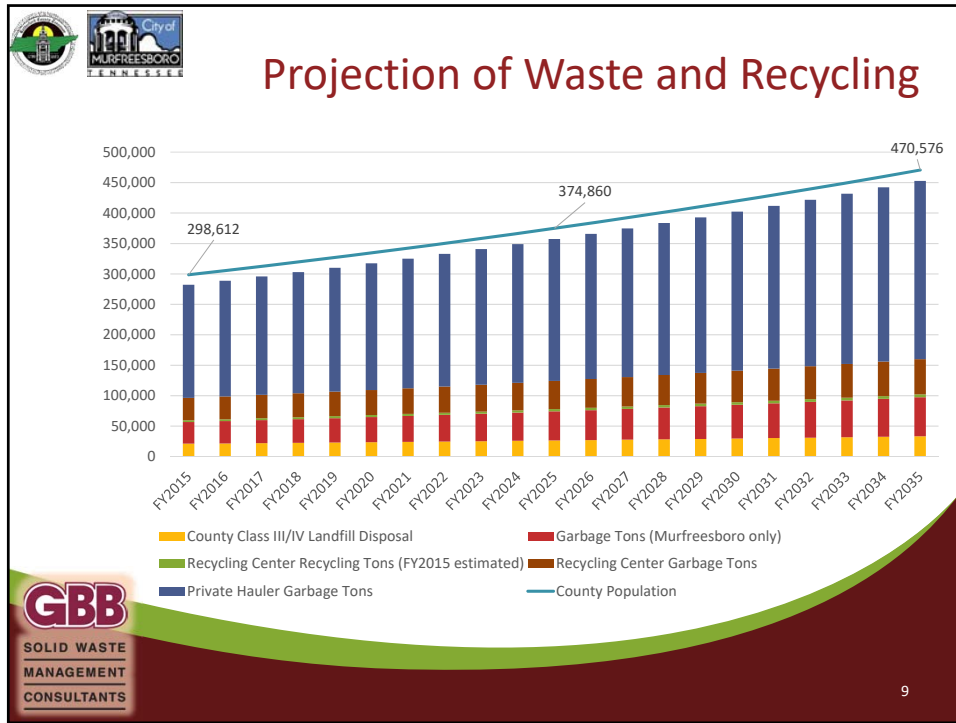
Growing Waste Stream

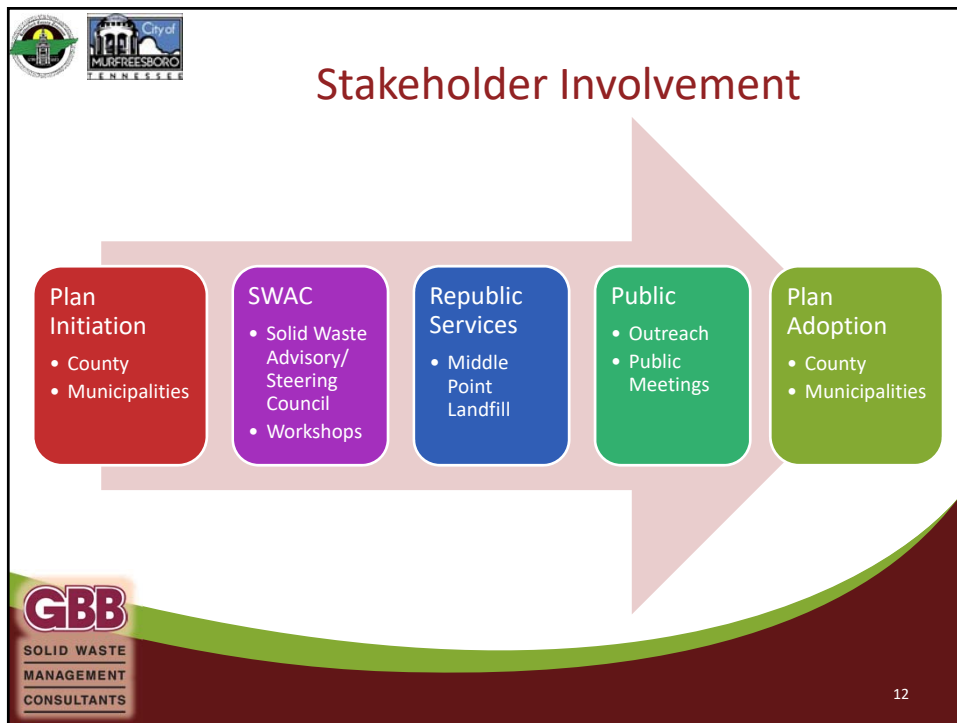
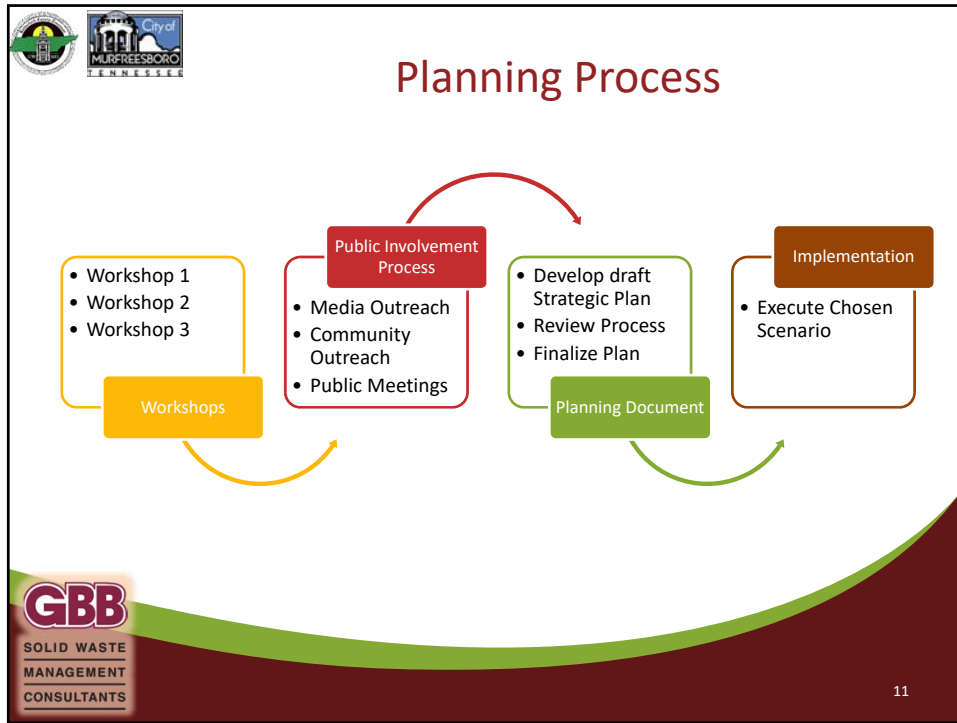


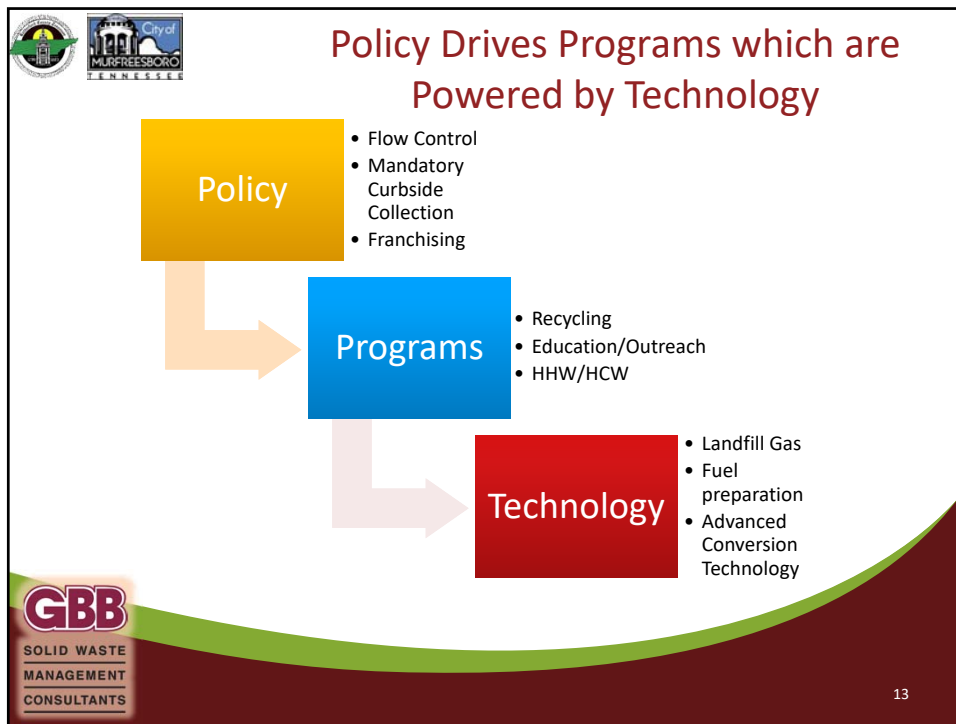


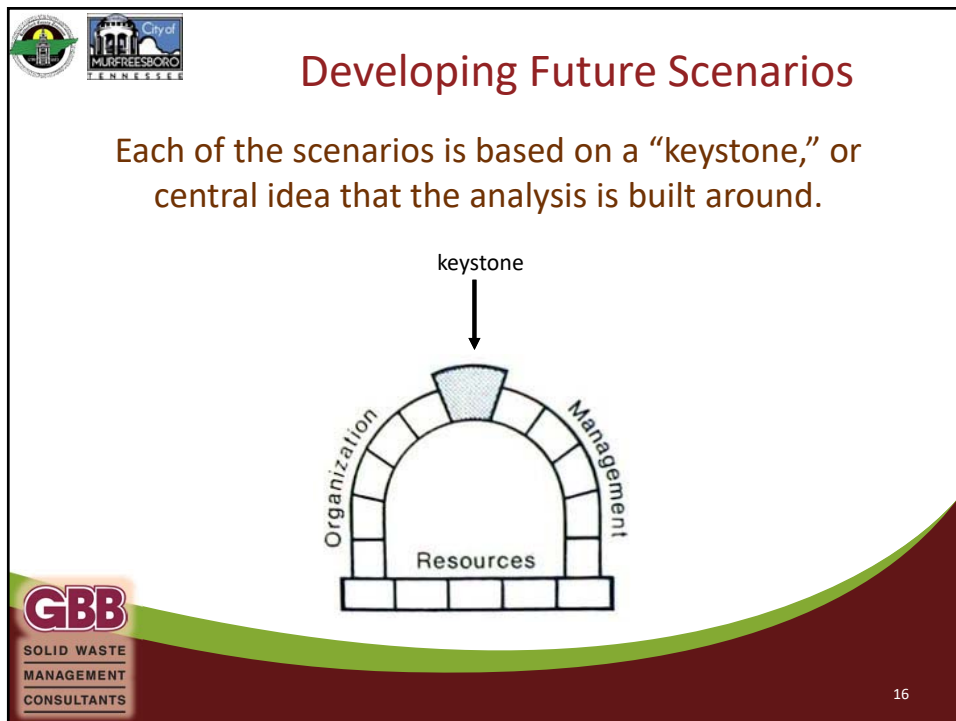
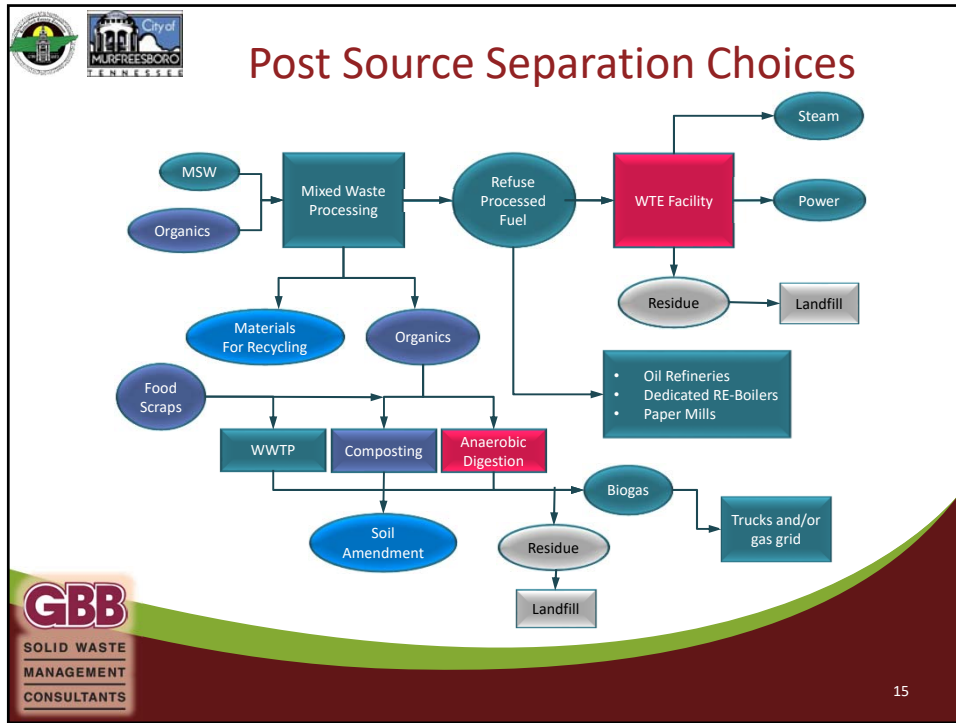
Source: Projections for the State of Tennessee, 2010-2030; The University of Tennessee Center for Business and Economic Research; June 2009

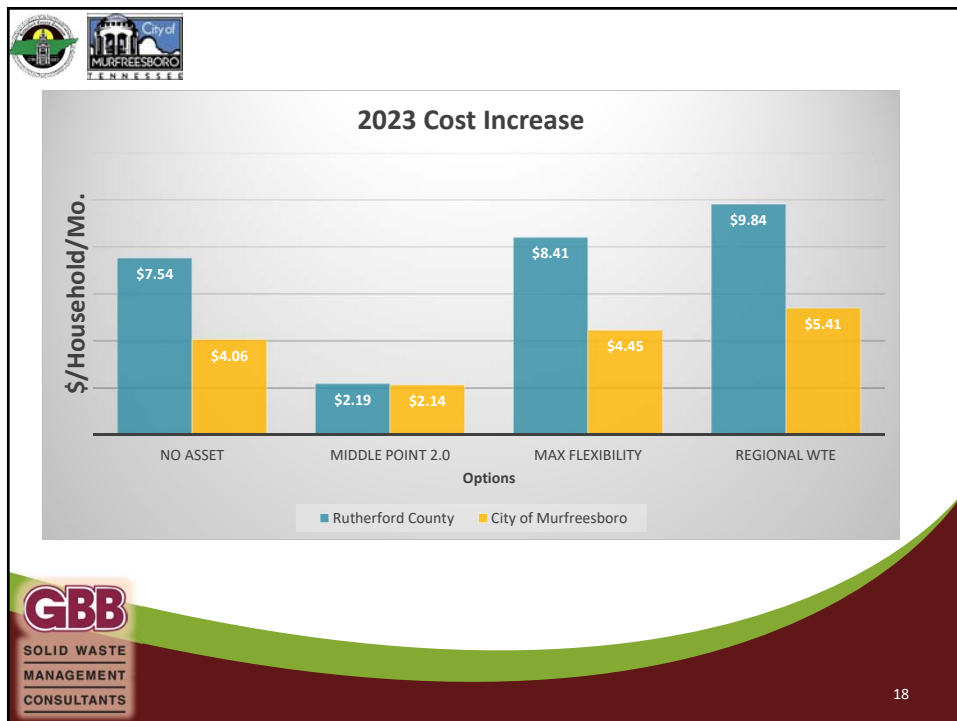
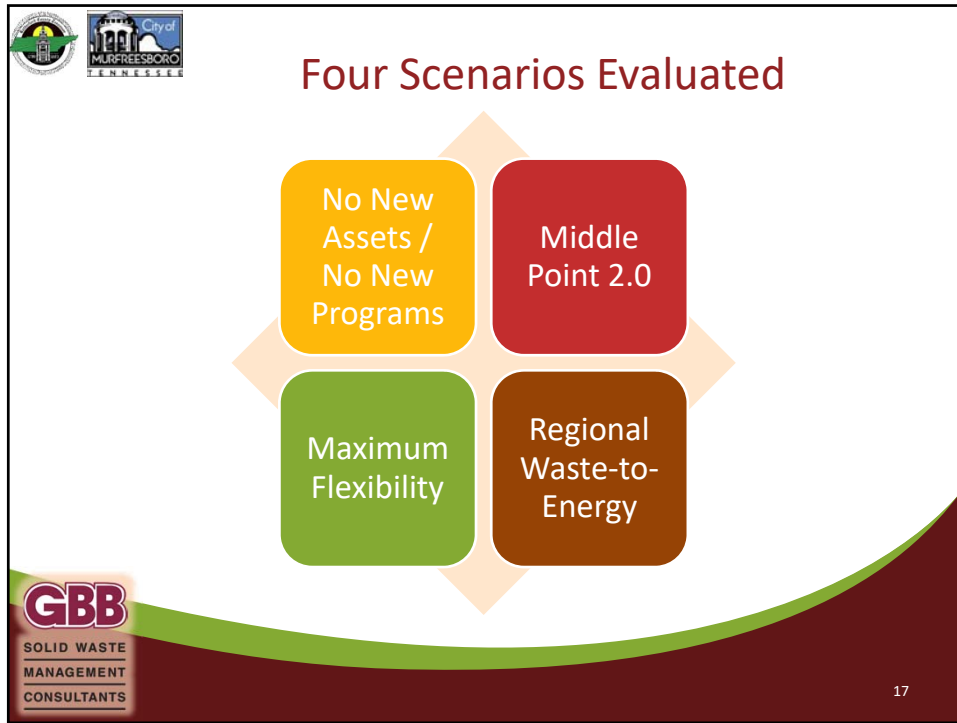
8

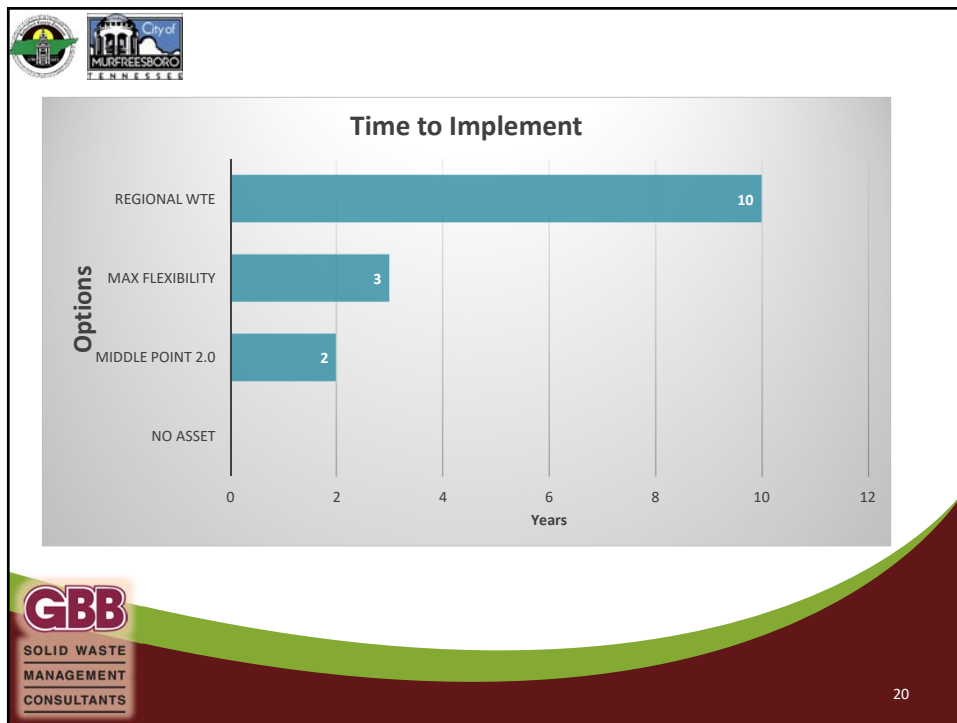
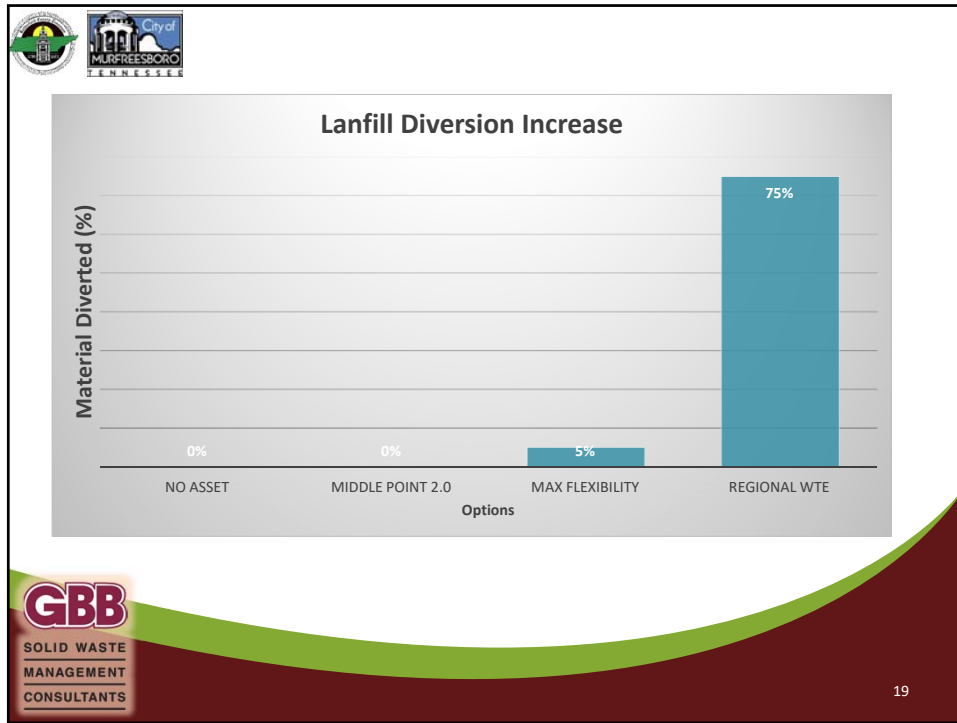


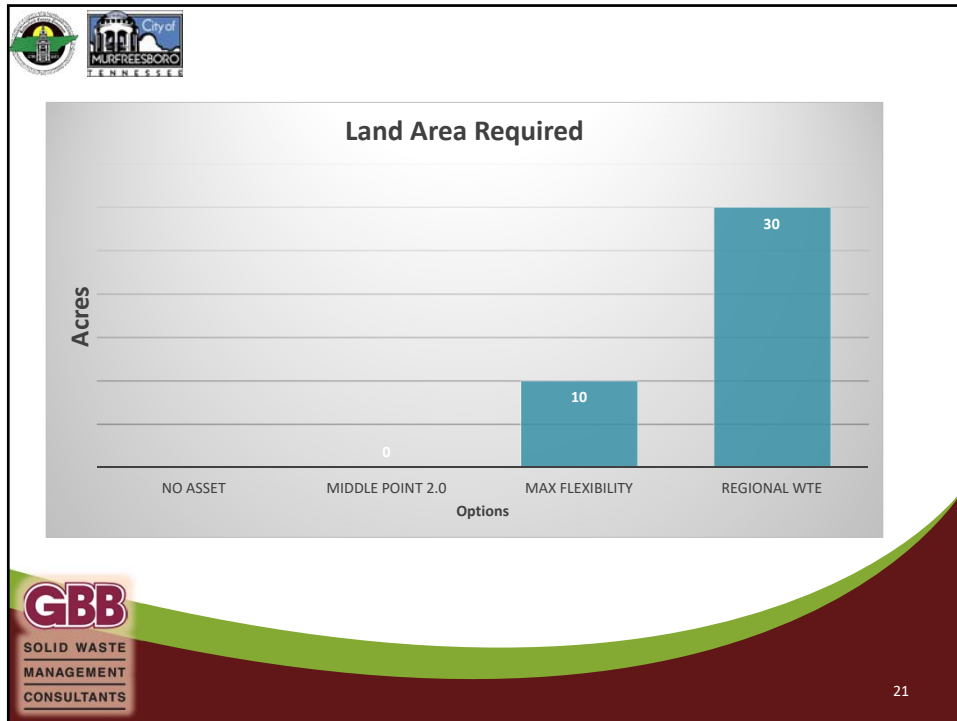














-
- The slide, titled "Governance of New System", lists four governance options. Each option is separated by a horizontal line. The options are: "No Action / Go It Alone", "Rutherford County Management", "Murfreesboro-Rutherford County Authority", and "Regional Authority". The slide includes logos for the City of Murfreesboro and GBB in the top left and bottom left corners. The GBB logo includes the text "SOLID WASTE MANAGEMENT CONSULTANTS".
- No Action / Go It Alone
 - Rutherford County Management
 - Murfreesboro-Rutherford County Authority
 - Regional Authority



Paying for the System

| | | |
|--------------------------------|---------------------|--------------------------------------|
| General Fund (Taxes) | Tipping Fees | System Benefit Charges / Assessments |
| Sales of Commodities or Energy | Host Community Fees | License Fees |
| Franchise Fees | Impact Fees | |



GBB
SOLID WASTE
MANAGEMENT
CONSULTANTS

23



Public Involvement Opportunities

| | |
|-------------------|--------------|
| Workshops | Social media |
| Electronic Survey | Focus Groups |
| Workshops | Interviews |



GBB
SOLID WASTE
MANAGEMENT
CONSULTANTS

24



Challenges and Lessons Learned

- Embracing Change**
 - County and Cities have done a great job letting people know that change is coming
- Schedule**
 - Initial schedule anticipated 11 month process
 - Currently in month 12 and only 1/2 complete
- Never Say Never**
 - Consideration of Middle Point Landfill expansion not originally expected
 - Opposition expected
- Champion(s) Needed**
 - Mayors being asked to push process forward



25



Thank You!



John G. Carlton, P.E., BCEE
GBB Senior Vice President
908-319-5992
jcarlton@gbbinc.com
www.gbbinc.com



26